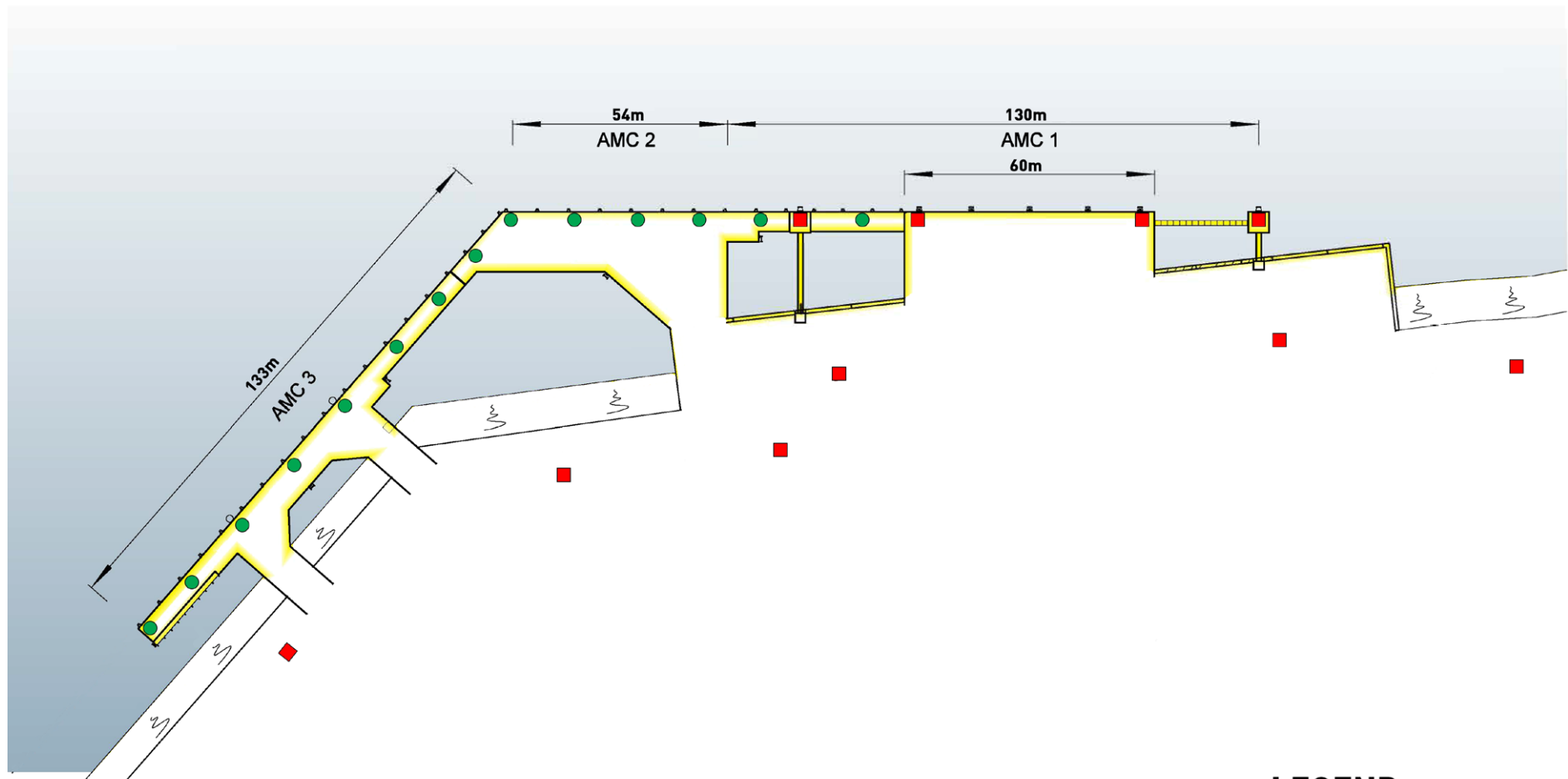
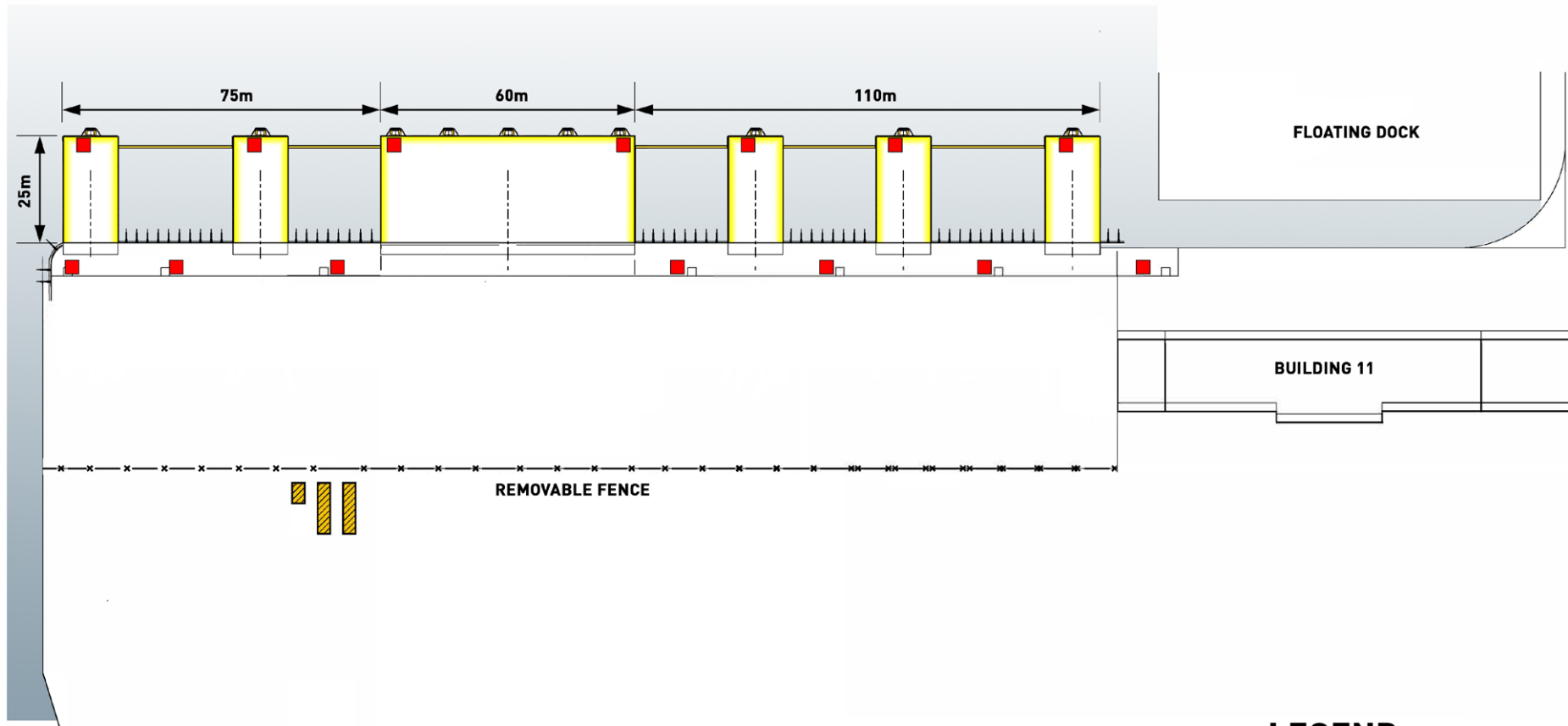


WHARF	ELEVATIONS (METRES)			
	A	B	C	D
AMC 1	3.6	(-)10.0	(-)11.0	8.0
AMC 2	3.6	(-)10.0	(-)10.0	N/A
AMC 3	3.6	(-)9.3	(-)9.3	N/A
AMC 4	4.5	(-)12.7	(-)12.7	N/A
AMC 5	4.5	(-)8.0	(-)8.0	N/A
AMC 6	4.5	(-)8.0	(-)8.0	N/A
C UF North	4.5	(-)8.0	(-)8.0	N/A



LEGEND

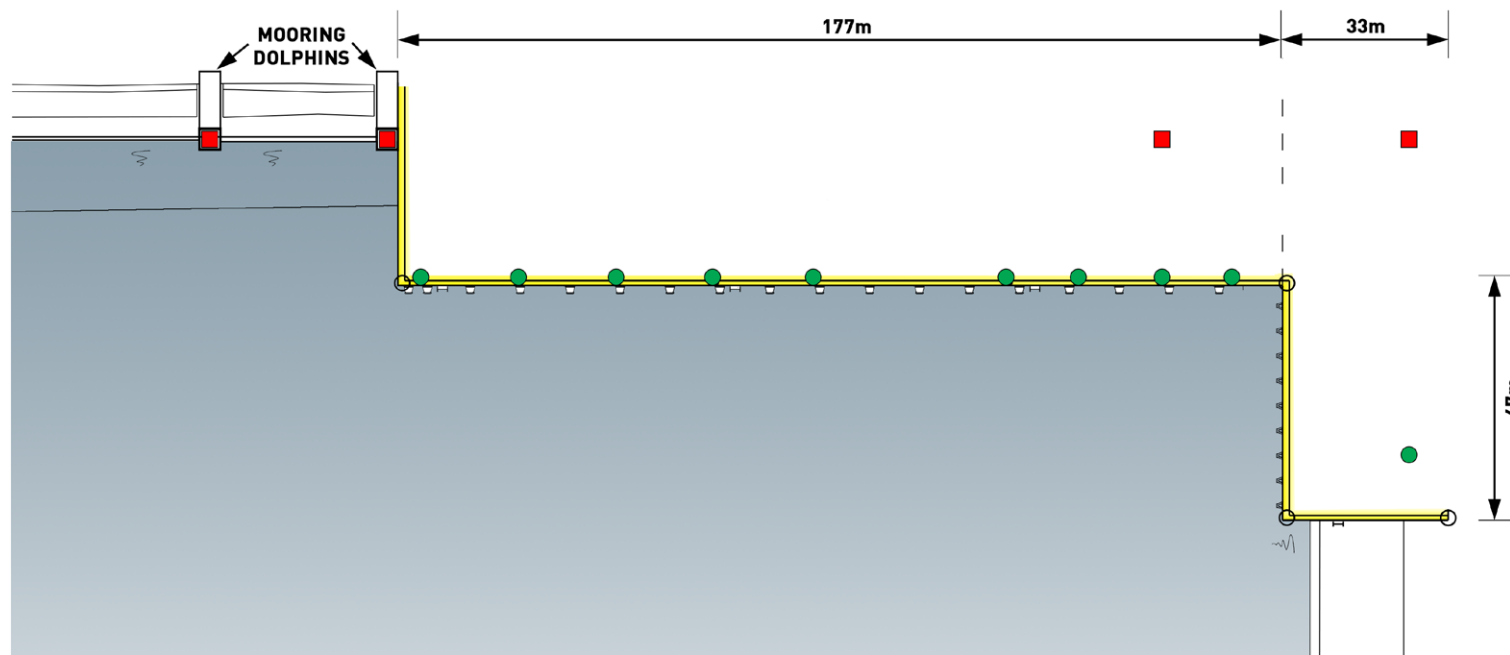
- 50 TONNE BOLLARD
- 120 TONNE BOLLARD



LEGEND

■ 120 TONNE BOLLARD

AMC 4 WHARF



LEGEND

- 60 TONNE BOLLARD
- 60 TONNE QUICK RELEASE HOOK

AMC 5 WHARF

Figure No.

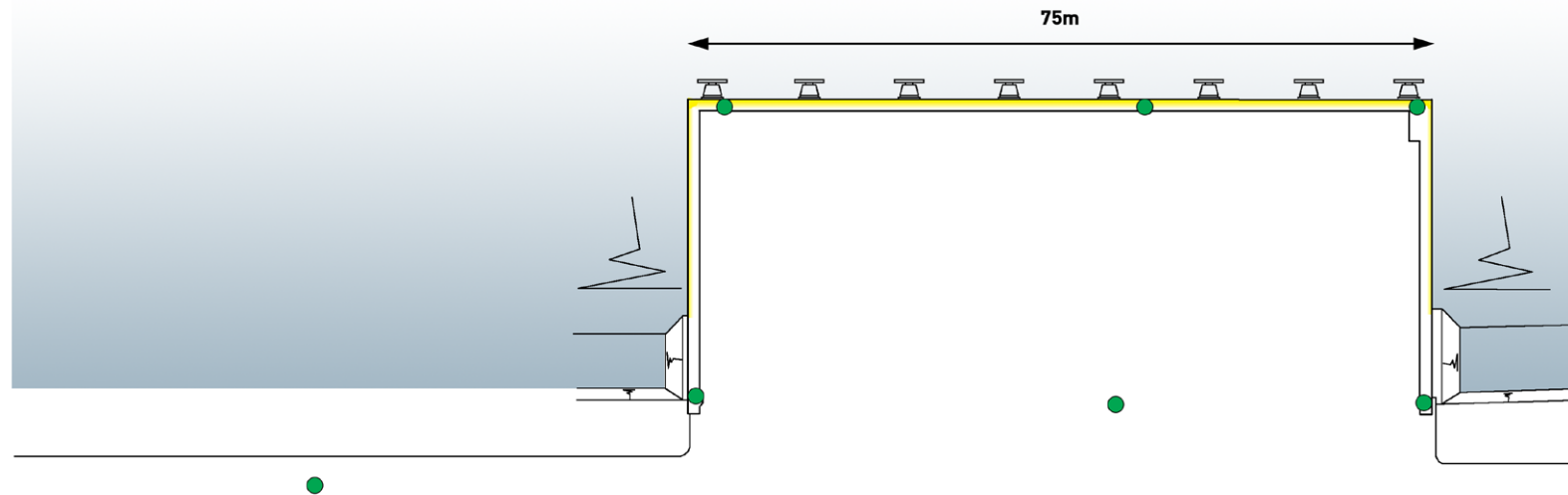
7

Rev

01

Date

02/08/16



LEGEND

● 60 TONNE BOLLARDS

AMC 6 WHARF